

# THE RAW BEAUTY PROJECT™

## **For Immediate Release**

Media Contacts: PMG, 323.337.9042

Henry Eshelman/Sabrina Zeile

[heshelman@platformgrp.com](mailto:heshelman@platformgrp.com); [sabrina@platformgroup.com](mailto:sabrina@platformgroup.com)

## **The Raw Beauty Project Rolls Into Los Angeles September 17**

### **One-Night Only Benefit Photo Exhibition in Pasadena Celebrates Beauty, Power, and Passion of Women With Disabilities**

[www.therawbeautyproject.com](http://www.therawbeautyproject.com)

“Stunning photographs”

--*New York Daily News*

“This breakthrough photo exhibit is challenging us to look at people with physical disabilities in a different light.”

--*Huffington Post*

“This 'Raw Beauty' project displaying photos of disabled women is absolutely inspiring.”

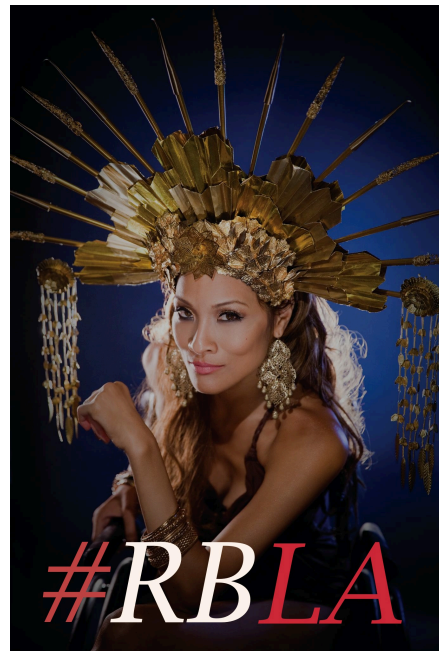
--*Cosmopolitan UK*

“...stunning portraits of unconventional models....“These photos prove beauty isn't determined by ability.”

--*Oprah.com*

**Pasadena, CA, August 16**--After its landmark debut in New York in 2014, *The Raw Beauty Project*, an innovative photography exhibit that celebrates women with disabilities, will have a one-night benefit exhibition showing at Paul Mitchell: The School located at 825 E Green St, Pasadena, CA 91101, beginning at 7:00PM on September 17, 2016. Tickets for the benefit reception, which includes cocktails and hors d'oeuvres, start at \$40 with a \$100 VIP package and can be purchased here: <http://rawbeautyprojectla.bpt.me>.

The goal of this evolving, traveling exhibit is to redefine perceptions of beauty, educate audiences, and empower **all** women. The Raw Beauty Project advocates for inclusion and inspires women to embrace their beauty, own their power, and live their passion. The exhibit photographs celebrate unstoppable women with disabilities, and educates viewers to redefine perceptions and beauty, unleashing potential for all.



**PLATFORM MEDIA GROUP**

AN Eshelman Red Rose Company

6767 FOREST LAWN DRIVE · SUITE 211 · LOS ANGELES, CA 90068 · 323.337.9042 · FAX.323.512.4110

Inspired by a photography exhibit in 2006, this groundbreaking art project made its debut in New York City in 2014, to a sold-out crowd.

The Raw Beauty Project in its current form was founded by [Ginny Dixon](#), Dr. Susan Solman, and Wendy Crawford. A renowned photographer, Dixon has served on three Pulitzer-Prize winning newspaper staffs, and is the Director of Photography at the Miami Ad School in Wynwood, Florida. Crawford was also a [TEDx speaker](#), and founder of [MobileWOMEN.org](#). Her mission is to raise awareness of issues that women with disabilities face. Dr. Solman, a podiatrist, pharmacist and professor, was paralyzed at age 40 from a spinal cord tumor. Solman devotes much of her time to inspiring others to move forward with their lives. These dynamic women have joined forces with other disabled women across the country, including actress and producer of reality television series "Push Girls," [Angela Rockwood](#), to volunteer their time to create The Raw Beauty Project LA.

The collection grows and changes with each subsequent exhibition. The Los Angeles exhibition includes 22 fashion and celebrity photographers, including Misty Fairbanks, Laura Tillinghast, Stuart Pettica, Dove Shore and Creative Director, Daryl Henderson. The show features more than twenty five amazing local models and their remarkable stories which accompany each image. In addition to traditional gallery prints, the Los Angeles exhibition will feature a new way to experience the works, called tactile printing. These images use raised surfaces so that visually impaired can feel them and experience the exhibit along with sighted guests.

The LA-area exhibition has been funded in part by an IndieGoGo campaign that raised more than \$6500, and the Project remains a grass-roots effort. The IndieGoGo funds are allocated towards expenses incurred in mounting, printing, production costs and promoting the exhibit. The Project hopes to raise more from the evening to further its mission, by touring the exhibit to other worthwhile organizations and events.

"The Raw Beauty Project celebrates the lives of women with disabilities while redefining beauty and unleashing potential," Dr. Solman says.

Photos from the New York exhibition are here (credit The Raw Beauty Project):  
<https://www.dropbox.com/sh/gcndrn1qck9xi7l/AAA5Was8onVV8QgYpd16ovtDa?dl=0>

In conclusion, the mission of this exhibit and these powerful women is to promote inclusion and create a global movement, where all are inspired to *Embrace their Beauty, Own their Power and Live their Passion*. To purchase tickets, visit:  
<http://www.brownpapertickets.com/event/2565619> .

Donations to The Raw Beauty Project are tax-deductible through a fiscal agent. The Raw Beauty Project is funded by sponsors, donations and event ticket sales. The Raw Beauty Project is a *sponsored artist* with Performance Zone Inc. (d/b/a The Field), ac not-for-profit, tax-exempt, 501(c)(3) organization serving the performing arts community.

To donate: <http://www.rawbeautynyc.com/donate.html>

# # #

**PLATFORM MEDIA GROUP**

AN ESHELMAN RED ROSE COMPANY

6767 FOREST LAWN DRIVE · SUITE 211 · LOS ANGELES, CA 90068 · 323.337.9042 · FAX.323.512.4110